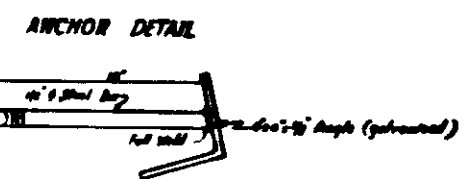
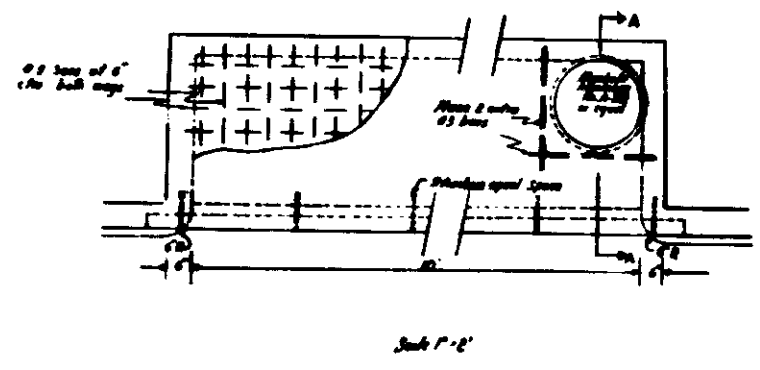
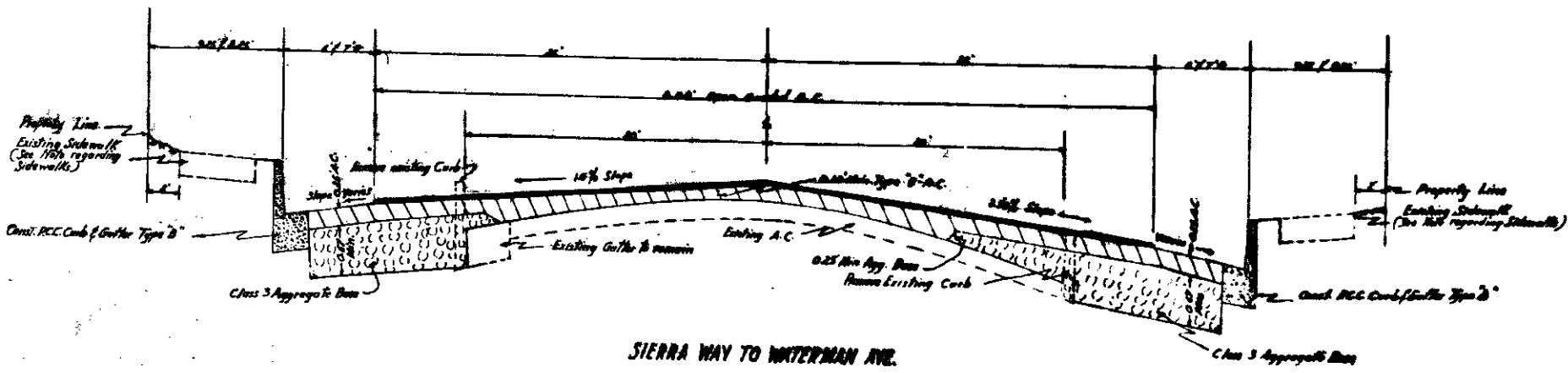
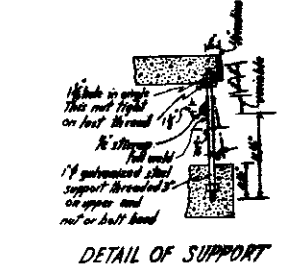
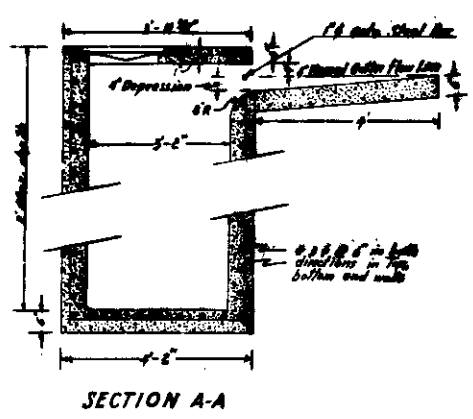
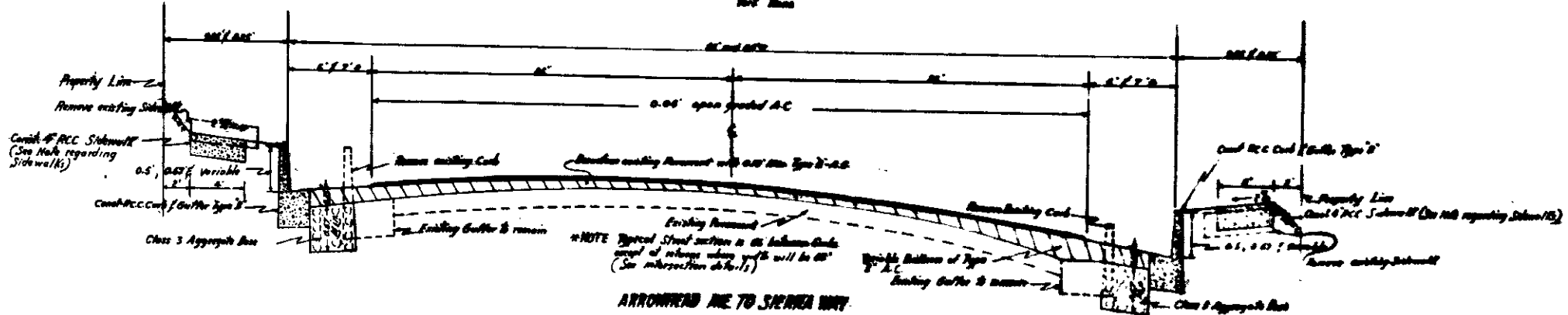


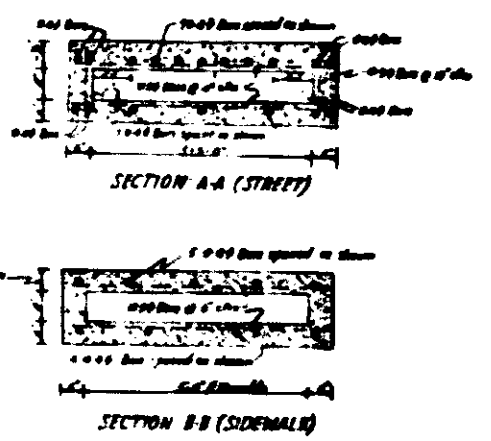
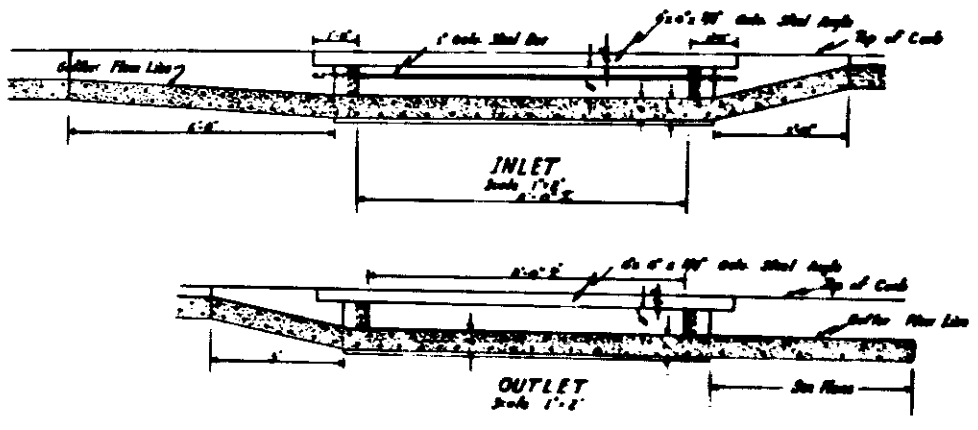
CATCH BASIN DETAIL



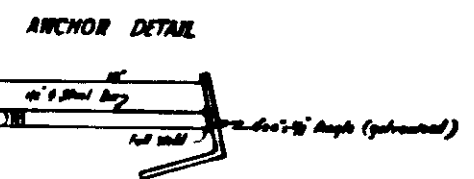
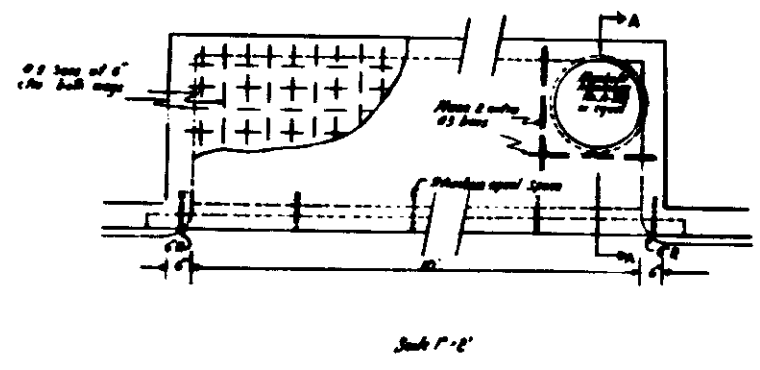
**NOTE REGARDING SIDEWALKS**  
 Between Arrowhead Ave and Sierra Way, existing sidewalks are to be removed and replaced by the Engineer on the plan and as directed by the Engineer. Between Sierra Way and Waterman Ave, sidewalks to be removed, or partially removed, and reconstructed where shown on the plan, where reported for construction of driveway and at other locations where designated by the Engineer.

TYPICAL CROSS SECTIONS  
 Scale: 1" = 8'  
 Not to Scale





**CATCH BASIN DETAIL**



**NOTE REGARDING SIDEWALKS**  
Between Arrowhead Ave and Sierra Way, existing sidewalks are to be removed and replaced by the Engineer. Between Sierra Way and Waterman Ave, existing sidewalks are to be removed, or partially removed, and reconstructed where shown on the plans, when approved for construction of driveway and/or other local uses where designated by the Engineer.

**TYPICAL CROSS SECTIONS**

Scale 1"=6"  
Not shown

